

Transform Westside Summit

Atlanta University Center: Anchor, Activist, Innovator

Mary Schmidt Campbell, Ph.D.
President, Spelman College

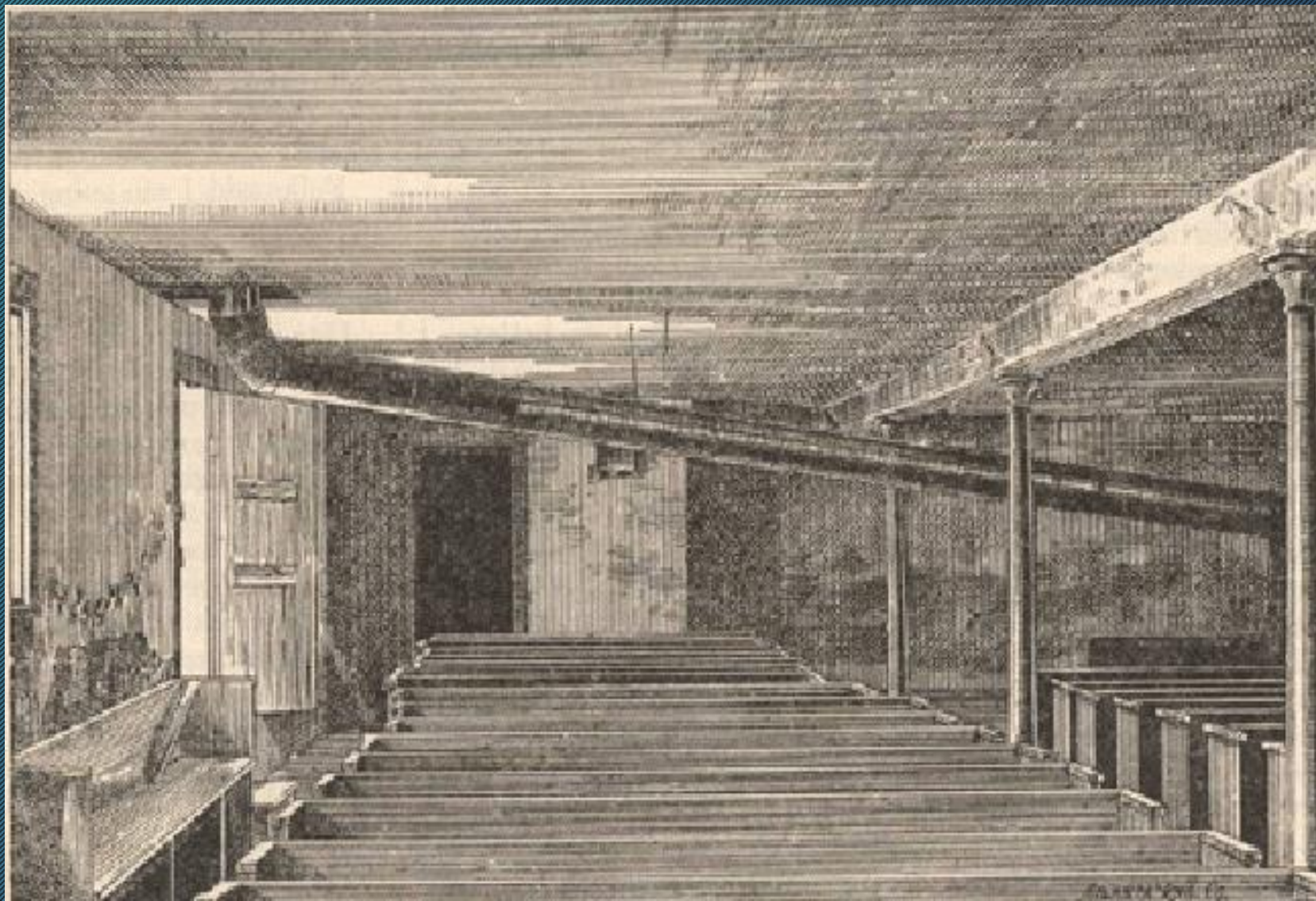
December 16, 2016

I. Atlanta University Center: The Past

Atlanta in Ruins: 1865, Post-Civil War



Higher Education for New Citizens: Friendship Baptist Church



Atlanta University, 1905



II. Atlanta University Center Consortium, Inc. (1929): Community Anchor

Atlanta University
Clark College
Morehouse College
Morris Brown College
Spelman College

Transform Lives



1892 Graduates

Produce Thought Leaders



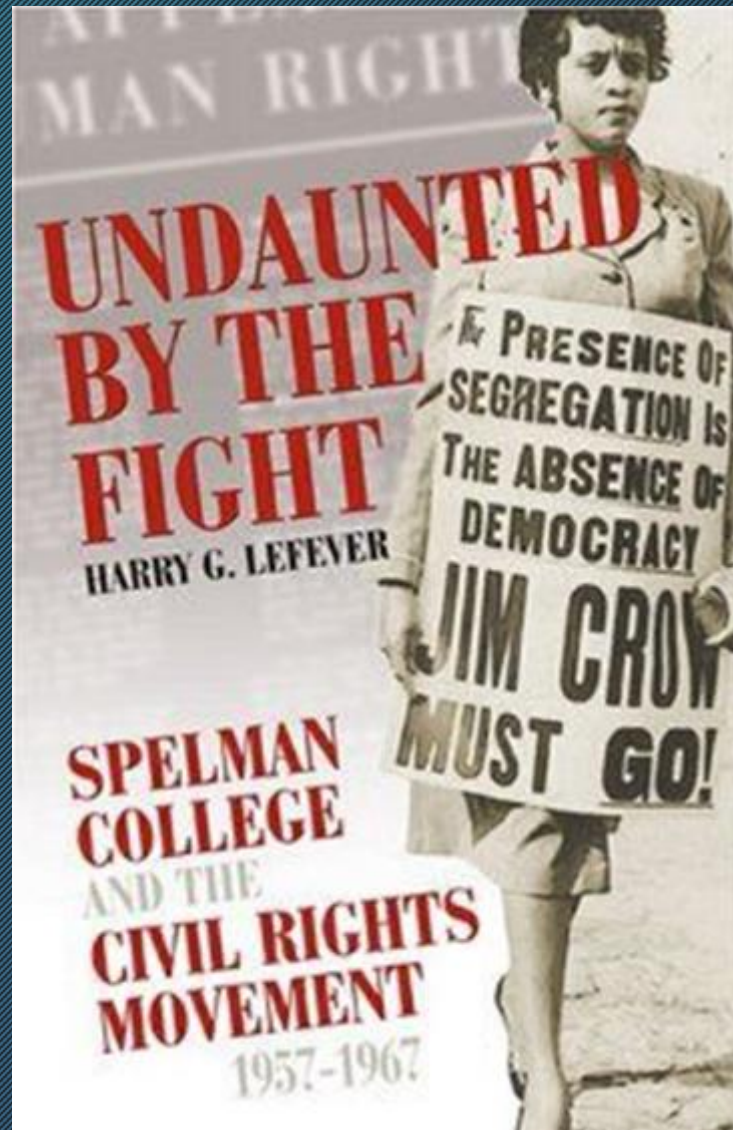
William Edward Burghardt Du Bois (1868-1963)

Incubate Social Justice Leaders

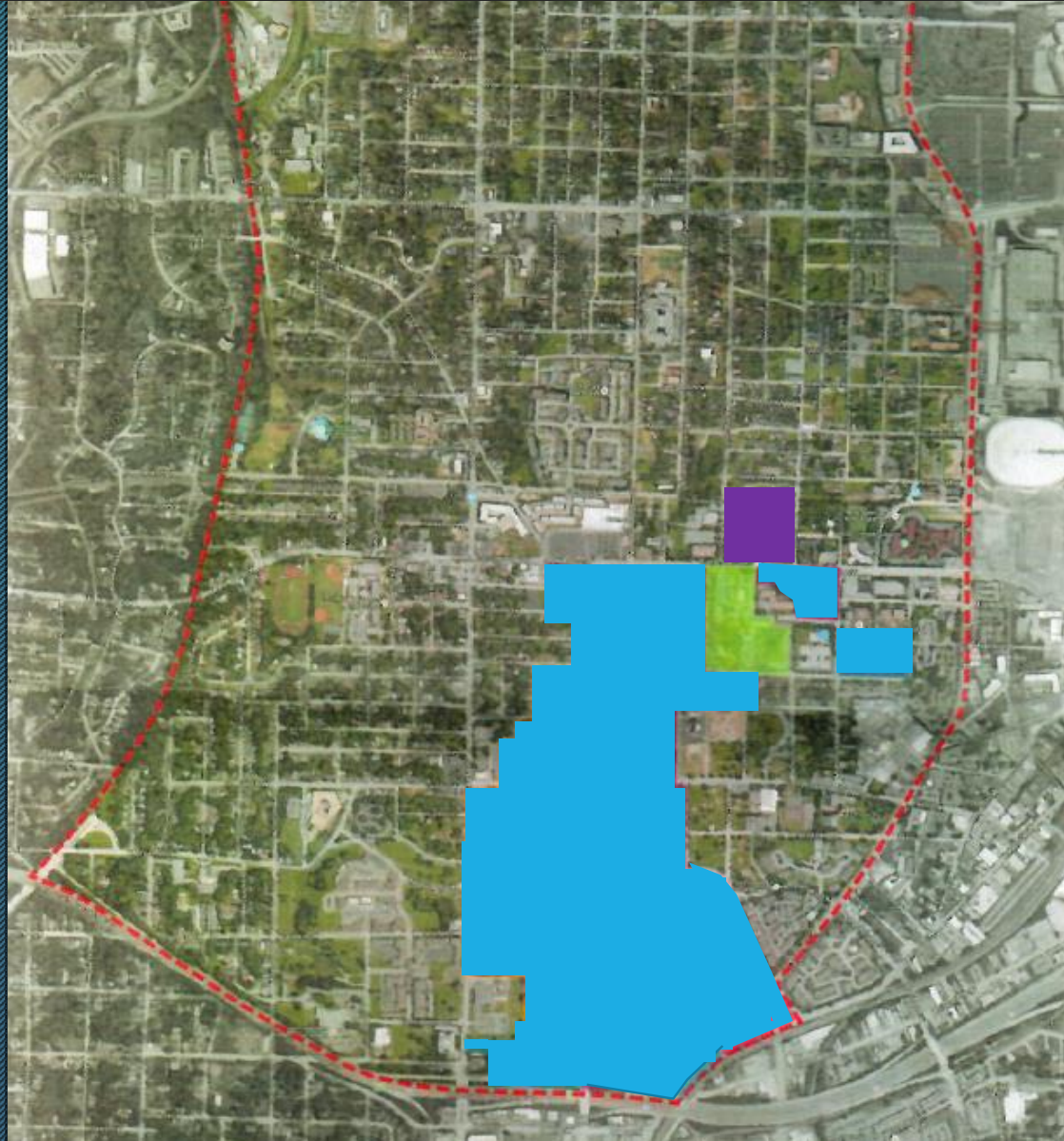


Martin Luther King, Jr. and colleagues

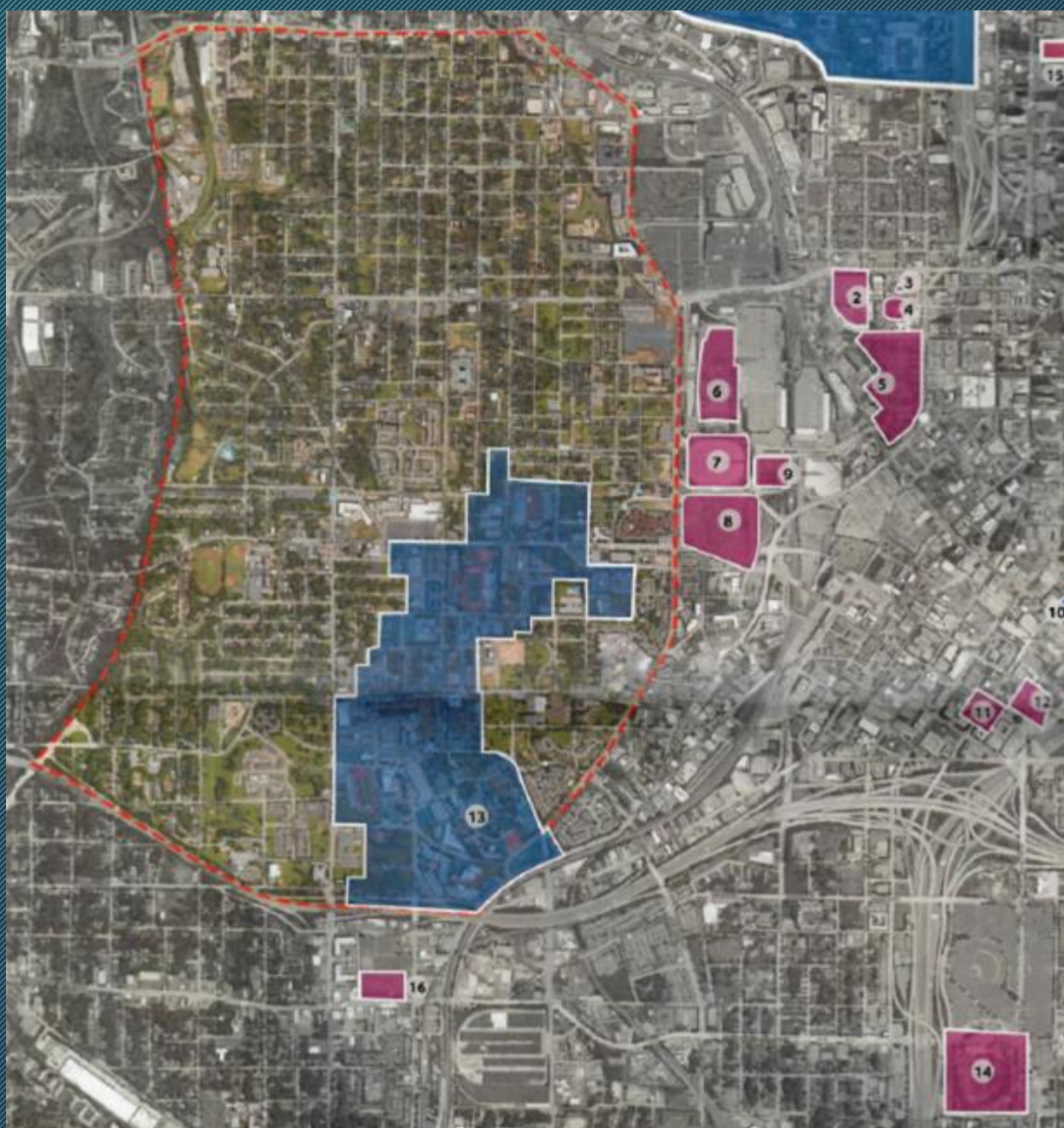
Ignite Change



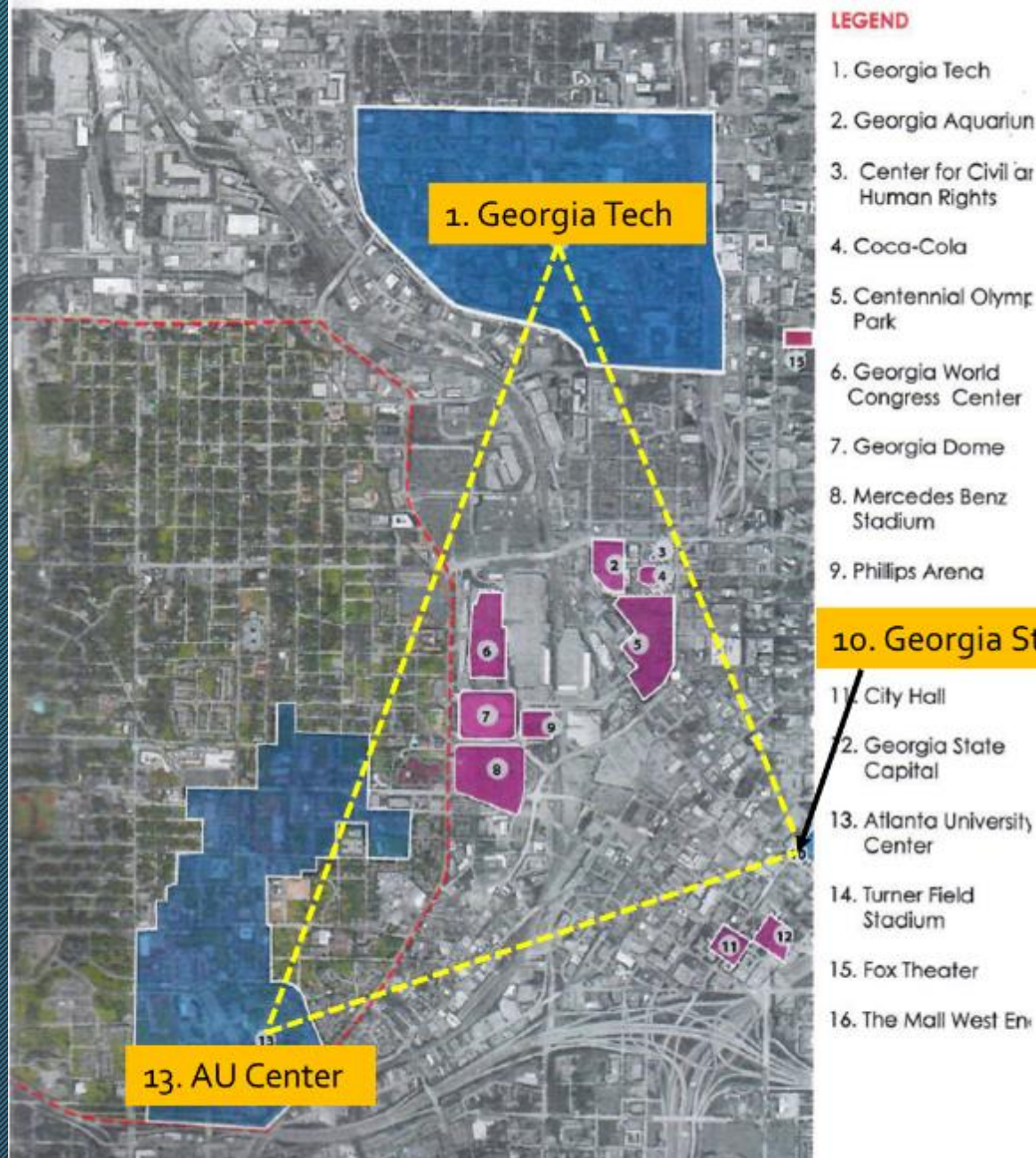
Atlanta University Center Consortium, Inc. 2016



-  Morehouse School of Medicine
-  Morehouse College
-  Spelman College
-  Clark Atlanta University
-  Interdenominational Theological Center
-  Morris Brown College







Atlanta University Center and Westside Atlanta



Atlanta University Center and the City of Atlanta

Campuses in the Atlanta University Center Consortium, Inc. 2016

Institution	Enrollment		Faculty & Staff	Endowment	Annual Budget	Size (acres)	Research Funds (2013 and 2014 combined)
	Undergrad	Grad					
 CLARK ATLANTA UNIVERSITY	3,101	797	672	\$62.2 M	\$85.8 M	126	\$20.2 M
 MOREHOUSE COLLEGE	2,163	/	509	\$132.3 M	\$93.7 M (revenue)	66	\$11.1 M
 MOREHOUSE SCHOOL OF MEDICINE	/	480	1,100	\$96.5 M FMV	\$155.1 M	40.8	\$48.5 M
 Spelman College® <i>A Choice to Change the World</i>	2,144 (Full and part time)	/	637	\$362 M (as of 6/30/15)	\$107.9 M (revenue FY 16)	39	\$24.2 M
Totals	7,408	1,277	2,918	\$653 M	\$442.5 M	271.8	\$104 M

Economic Impact

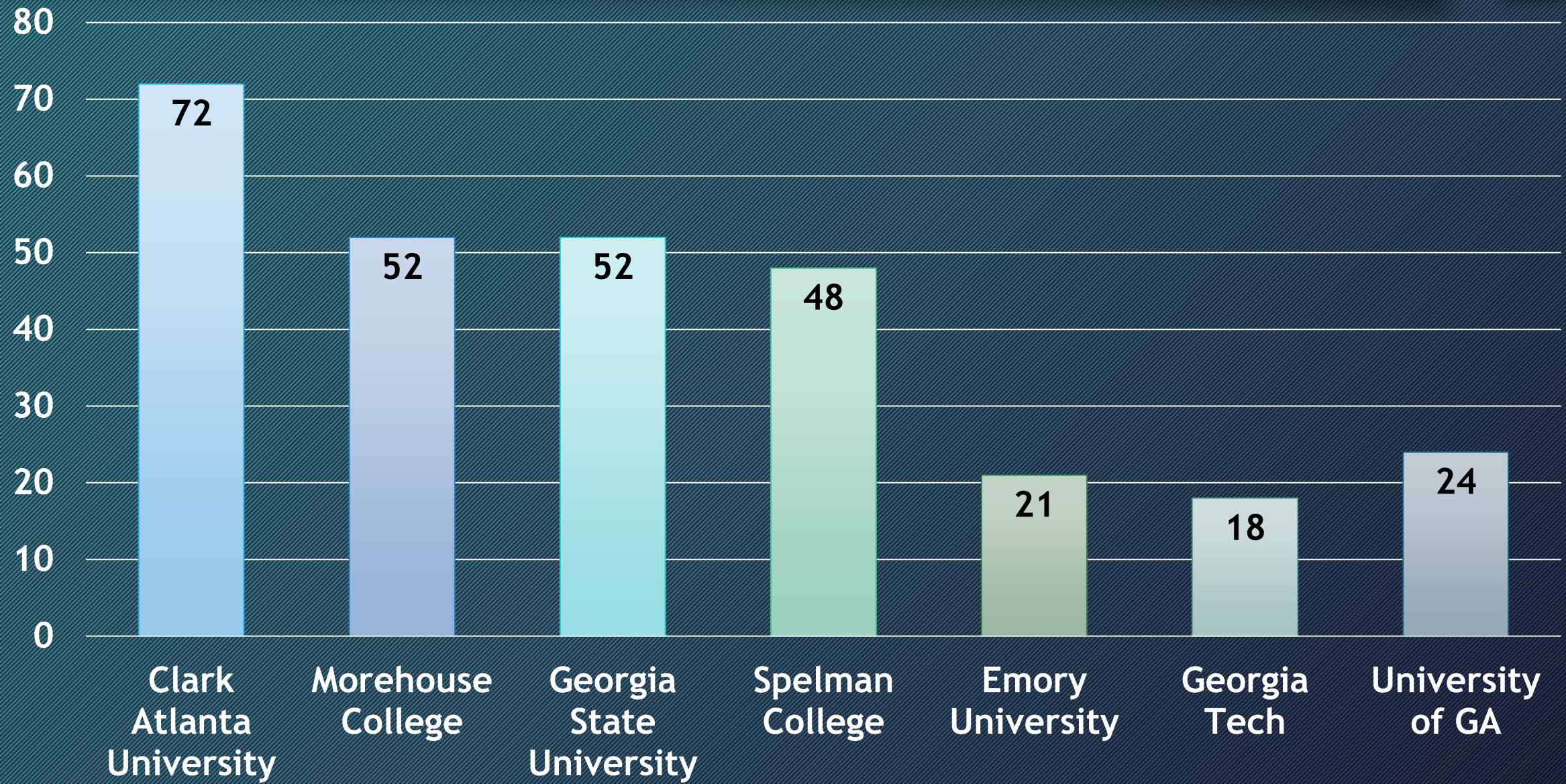


Total Salaries & Benefits of AUCC, Inc.
= \$270 M

Annual Atlanta Multiplier
\$270 M x 1.9 = \$513 M

Long-Term Georgia Multiplier
\$270 M x 3.5 = \$945 M

% Pell Students



Westside Population vs. AUC Population



21,146 Residents



8,000 Enrolled Students



3,000 Faculty & Staff

III. Atlanta University Center Community Outreach

Atlanta University Center Community Connection University Community Development Corporation (UCDC)



Rita B. Gibson
Interim Executive Director



Art Frazier
Chair of the Board of Directors

Housing Development

946 Palmetto Ave



952 Palmetto Ave



983 Palmetto Ave



1000 Parsons St



1008 Parsons St



1011 Parsons St



Sustainability: EcoDistrict

Project Areas

Energy



AUC Energy Audits
Greening Series

Transportation



Relay Bike Share
Bike Lane, BeltLine and
Streetcar Expansions
MARTA Bus Stop
Adoption

Urban Agriculture



Farmers Markets
Community Outreach

Safety



Security Cameras
The Boone Park West
The Cle Fitz Johnson
Park

Waste



AUC Student Cleanups
Tire Disposal Education

Public Safety: Cameras



IV. Atlanta University Center Consortium, Inc.: Community Educator

#WESTSIDESTANDUP

GENTRIFICATION IS
HAPPENING

STAND UP, SPEAK OUT

STUDENT TOWN HALL

LET'S IMPACT OUR COMMUNITY TOGETHER



1. Miriam Areta
2. Clarissa Brooks
3. Jill Cartwright
4. Rodney Davis
5. Eva Dickerson
6. Imani Dixon
7. Taylor Harrell
8. Mya Havard
9. Mary-Pat Hector

10. Micah Henson
11. Nia Lundkvist
12. Renee Peterkin
13. Ashley Reid
14. Nkenge Walcott
15. Jabarey Wells
16. Parker Williams
17. Nia Woods

Westside Stand Up: AUC Students Speak

AUC STUDENTS: Citizens of the Westside

- Planted **65 trees** in Oakland City with Trees Atlanta
- Sorted **61,448 pounds of food** and packaged **92,180 meals** with the Atlanta Community Food Bank
- Engaged **100 3rd-5th grade girls** in STEM learning by hosting Saturday workshops open to elementary students in the Washington High School Cluster

AUC STUDENTS: Citizens of the Westside

- Delivered hands-on math activities during special Math Masters program provided weekly for **40 elementary school students** in the Washington High School Cluster
- Provide weekly **environmental education** experiences to students at **M. Agnes Jones Elementary School** and **Michael R. Hollis Innovation Academy** in partnership with **Greening Youth Foundation**
- Partnered with **Habesha, Inc** to deliver **16 healthy eating and active living workshops** to participants at the **New Horizons Senior Center** located in the English Avenue community

Booker T. Washington High School



Tuskegee Airmen Global Academy



M. Agnes Jones Elementary School



M. R. Hollis Innovation Academy



J.E. Brown Elementary School



KIPP Ways Academy



K-12 Excellence

Bridge to Future

Early Childhood Education

STEM and STEAM

Schools

V. Atlanta University Center: Innovators

AUC Coca-Cola Collaboration

Atlanta University Center Consortium, Inc.

Energy
Conservation

Unified Central
Monitoring
Station



Collaborative
Purchasing
Consortium

EcoDistrict
Projects

AUC: Leaders in STEM



Shelley Cobb, Spelman C'2017, in a lab in England

Center for Cancer Research and Therapeutic Development (CCRTD) at Clark Atlanta University



Undergraduate Health Sciences Academy at Morehouse School of Medicine



Morehouse Research Institute



Spelman College Innovation Lab

