

Transform Westside Summit  
Atlanta University Center: Anchor,  
Activist, Innovator

Mary Schmidt Campbell, Ph.D.  
President, Spelman College

December 16, 2016

# I. Atlanta University Center: The Past

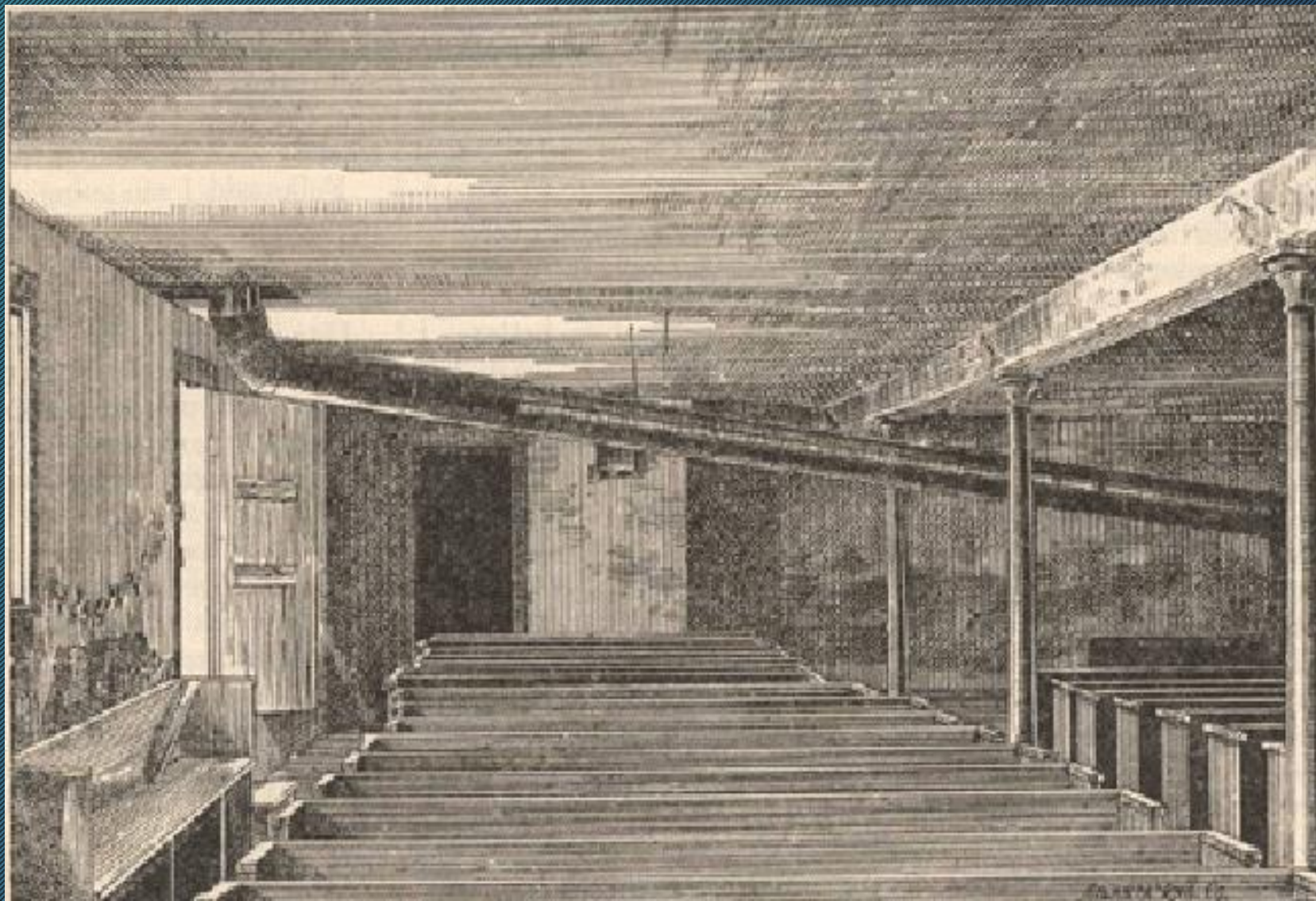


# Atlanta in Ruins: 1865, Post-Civil War





## Higher Education for New Citizens: Friendship Baptist Church





# Atlanta University, 1865



## **II. Atlanta University Center Consortium, Inc. (1929): Community Anchor**



# Transform Lives



1892 Graduates



# Produce Thought Leaders



William Edward Burghardt Du Bois (1868-1963)



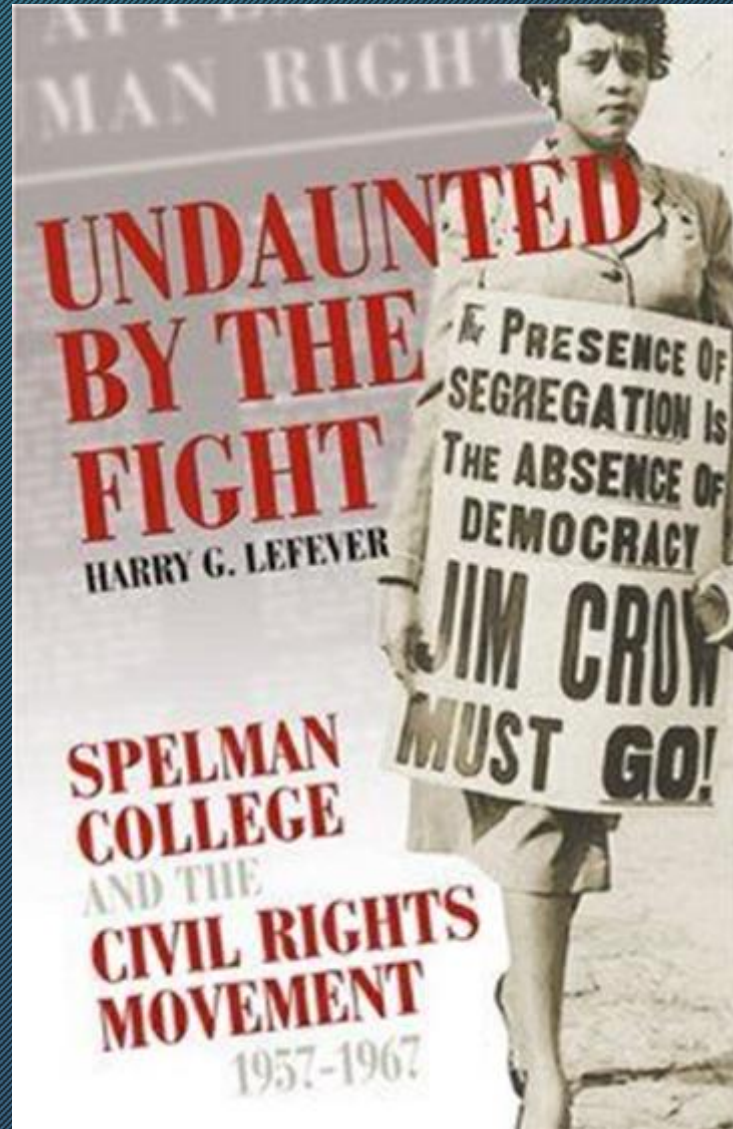
# Incubate Social Justice Leaders



Martin Luther King, Jr. and colleagues

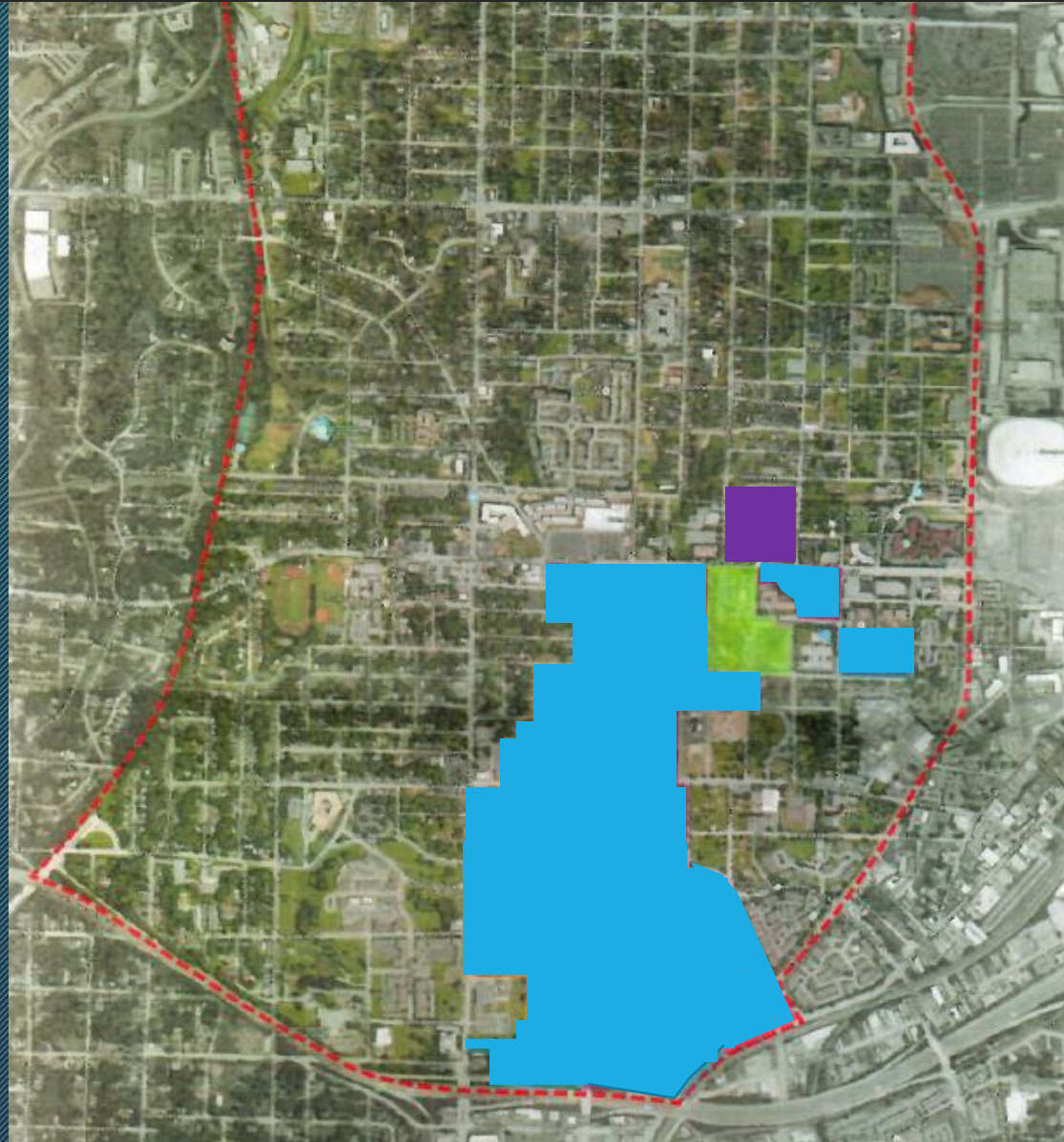


# Ignite Change



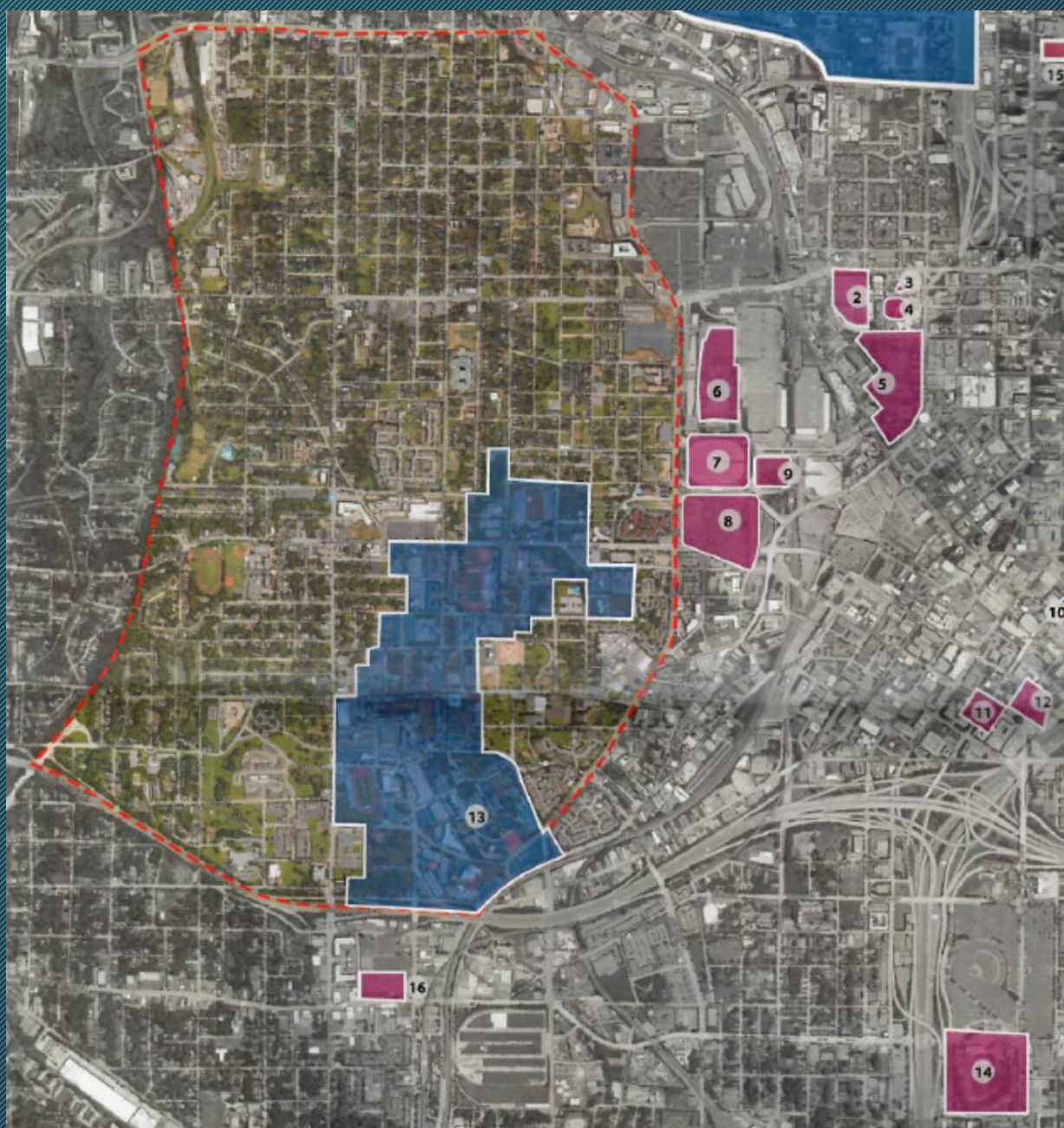


# Atlanta University Consortium, Inc. 2016



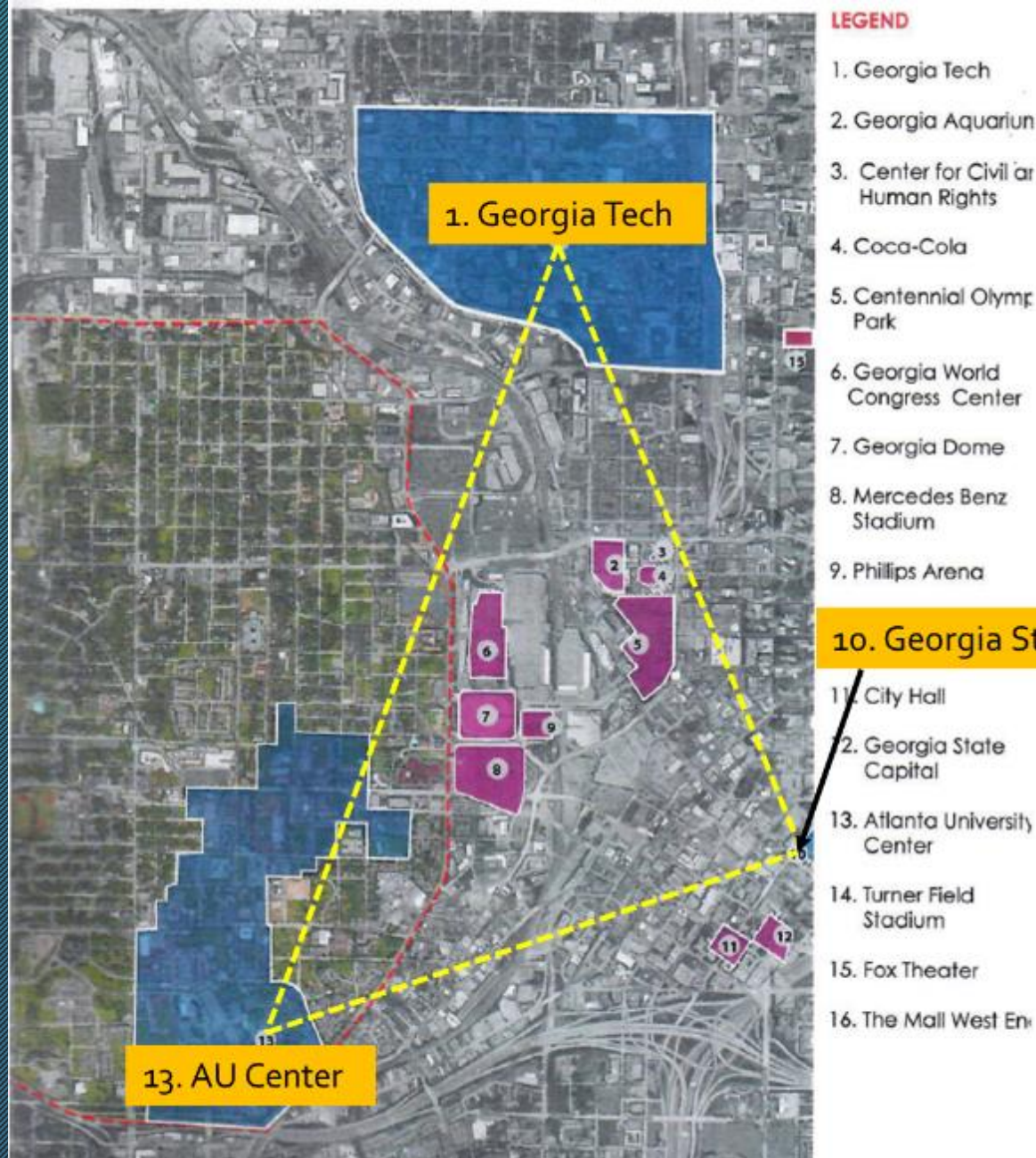
-  Morehouse School of Medicine
-  Morehouse College
-  Spelman College
-  Clark Atlanta University
-  Interdenominational Theological Center
-  Morris Brown College









**Atlanta University Center and Westside Atlanta**





# Atlanta University Center and the City of Atlanta

# Campuses in the Atlanta University Center Consortium, Inc. 2016

Institution	Enrollment		Faculty & Staff	Endowment	Annual Budget	Size (acres)	Research Funds (2013 and 2014 combined)
	Undergrad	Grad					
 CLARK ATLANTA UNIVERSITY	3,101	797	672	\$62.2	\$85.8 M	126	\$20.2 M
 MOREHOUSE COLLEGE	2,163	/	509	\$132.3 M	\$93.7 M (revenue)	66	\$11.1 M
 MOREHOUSE SCHOOL OF MEDICINE	/	480	1,100	\$96.5 M FMV	\$155.1 M	40.8	\$48.5 M
 Spelman College® <i>A Choice to Change the World</i>	2,144 (Full and part time)	/	637	\$362 M (as of 6/30/15)	\$107.9 M (revenue FY 16)	39	\$24.2 M
<b>Totals</b>	<b>7,408</b>	<b>1,277</b>	<b>2,918</b>	<b>\$653 M</b>	<b>\$442.5 M</b>	<b>271.8</b>	<b>\$104 M</b>



# Economic Impact



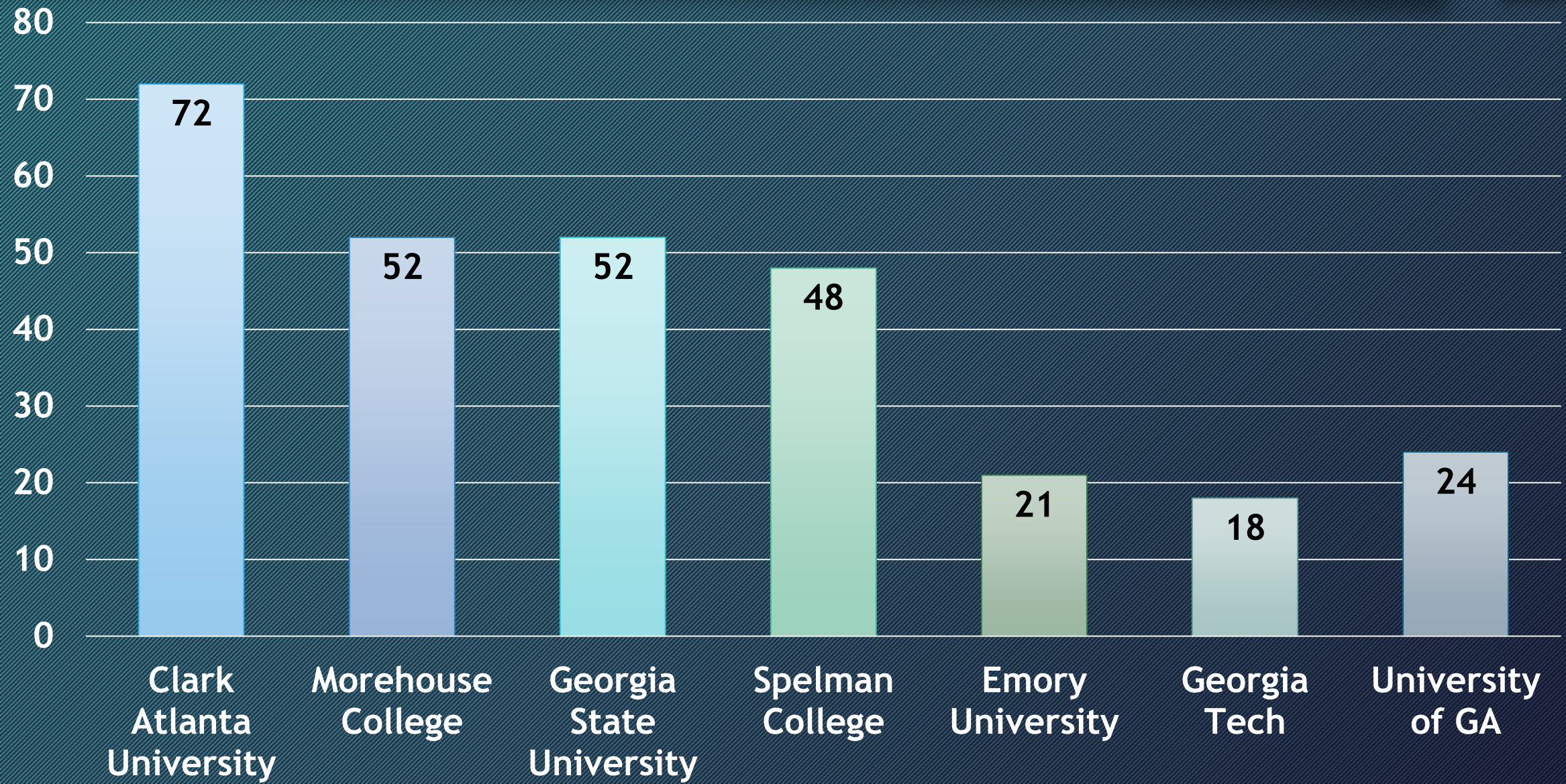
Total Salaries & Benefits of AUCC, Inc.  
= **\$270 M**

Annual Atlanta Multiplier  
**\$270 M x 1.9 = \$513 M**

Long-Term Georgia Multiplier  
**\$270 M x 3.5 = \$945 M**



# % Pell Students





# Westside Population vs. AUC Population



**21,146** Residents



**8,000** Enrolled Students



**3,000** Faculty & Staff



## **III. Atlanta University Center Community Outreach**



# Atlanta University Center Community Connection



**Rita B. Gibson**  
Interim Executive Director



**Art Frazier**  
Chair of the Board of Directors



# Housing Development

**946 Palmetto Ave**



**952 Palmetto Ave**



**983 Palmetto Ave**



**1000 Parsons St**



**1008 Parsons St**



**1011 Parsons St**





# Sustainability: EcoDistrict

## Project Areas

### Energy



AUC Energy Audits  
Greening Series

### Transportation



Relay Bike Share  
Bike Lane, BeltLine and  
Streetcar Expansions  
MARTA Bus Stop  
Adoption

### Urban Agriculture



Farmers Markets  
Community Outreach

### Safety



Security Cameras  
The Boone Park West  
The Cle Fitz Johnson  
Park

### Waste



AUC Student Cleanups  
Tire Disposal Education



# Public Safety: Cameras





## **IV. Atlanta University Center Consortium, Inc.: Community Educator**



# #WESTSIDESTANDUP

GENTRIFICATION IS  
HAPPENING

STAND UP, SPEAK OUT

STUDENT TOWN HALL

LET'S IMPACT OUR COMMUNITY TOGETHER



1. Miriam Areta
2. Clarissa Brooks
3. Jill Cartwright
4. Rodney Davis
5. Eva Dickerson
6. Imani Dixon
7. Taylor Harrell
8. Mya Havard
9. Mary-Pat Hector

10. Micah Henson
11. Nia Lundkvist
12. Renee Peterkin
13. Ashley Reid
14. Nkenge Walcott
15. Jabarey Wells
16. Parker Williams
17. Nia Woods

Westside Stand Up: AUC Students Speak



# AUC STUDENTS: Citizens of the Westside

- Planted **65 trees** in Oakland City with Trees Atlanta
- Sorted **61,448 pounds of food** and packaged **92,180 meals** with the Atlanta Community Food Bank
- Engaged **100 3rd-5th grade girls** in STEM learning by hosting Saturday workshops open to elementary students in the Washington High School Cluster.



# AUC STUDENTS: Citizens of the Westside

- Delivered hands on math activities during special Math Masters program provided weekly for **40 elementary school students** in the Washington High School Cluster
- Provide weekly **environmental education** experiences to students at **M. Agnes Jones Elementary School** and **Michael R. Hollis Innovation Academy** in partnership with **Greening Youth Foundation**
- Partnered with **Habesha, Inc** to deliver **16 healthy eating and active living workshops** to participants at the **New Horizons Senior Center** located in the English Avenue community



Booker T. Washington High School



Tuskegee Airmen Global Academy



M. Agnes Jones Elementary School



M. R. Hollis Innovation Academy



J.E. Brown Elementary School



KIPP Ways Academy



K-12 Excellence

Bridge to Future

Early Childhood Education

STEM and STEAM

Schools



## **V. Atlanta University Center: Innovators**



# AUC Coca-Cola Collaboration

Atlanta University Center Consortium, Inc.

Energy  
Conservation

Unified Central  
Monitoring  
Station



Collaborative  
Purchasing  
Consortium

EcoDistrict  
Projects



# AUC: Leaders in STEM



Shelley Cobb, Spelman C'2017, in a lab in England



# Center for Cancer Research and Therapeutic Development (CCRTD) at Clark Atlanta University





# Undergraduate Health Sciences Academy at Morehouse School of Medicine





# Morehouse Research Institute





# Spelman College Innovation Lab

