



Westside
Future Fund

Annual Update

September 21, 2018



Today's Update

- Why We're Here
- Where We're Focused
- What We've Done
- Where We're Going



“Our goal is to create **a beloved community**, and this will require a qualitative change in our souls as well as a quantitative change in our lives.”

- Dr. Martin Luther King, Jr., 1966



A photograph of a community revitalization event. In the foreground, four people are walking on a paved path. From left to right: a young woman in a blue sweatshirt and light blue jeans holding an ice cream cone; a woman in a white t-shirt with a green circular logo and camouflage pants; a woman in a white t-shirt with a green circular logo and blue jeans carrying a green tote bag; and a man in a black sleeveless shirt and black shorts pushing a blue bicycle and carrying a green tote bag. In the background, there are white tents, a colorful umbrella, and other people. The text "Community revitalization focused on resident retention" is overlaid in white and yellow. A yellow logo is in the bottom left corner.

Community revitalization focused
on resident retention



VISION

A community Dr. King would be proud to call home.

MISSION

To advance a compassionate approach to neighborhood revitalization that creates a diverse, mixed-income community, improves the quality of life for current and future residents, and elevates the Historic Westside's unique history and culture.

VALUES

Do with the Community, not to the Community

Be Compassionate

Have Integrity in Everything

Be Creative

Deliver Results



Building **Trust**. Building **Partnership**.

Building: The process or business of constructing something

Trust: Assured reliance on the character, ability, or strength of someone or something

Partnership: A collaborative relationship between entities to work toward shared objectives



Where we Focus for Positive Change



CRADLE-TO-
CAREER
EDUCATION



MIXED-INCOME
COMMUNITIES



SAFETY &
SECURITY



COMMUNITY
HEALTH &
WELLNESS



How We Show Up



Highlighting 2017–2018 Progress





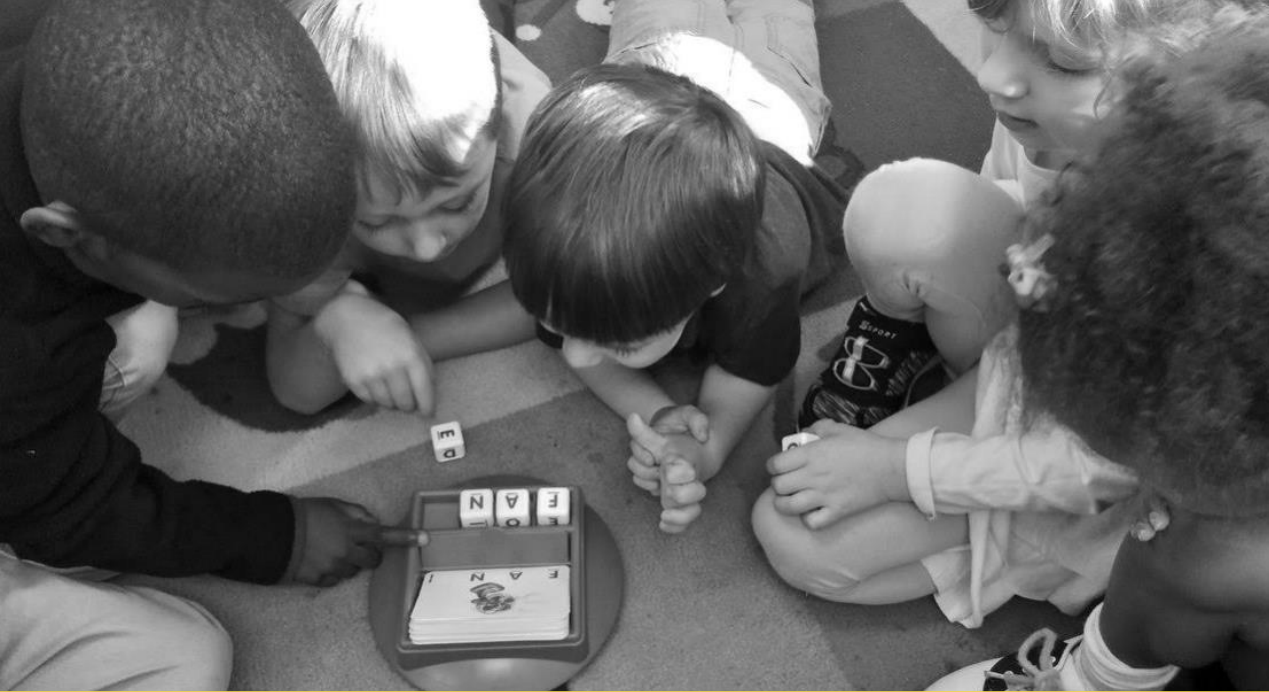
Cradle-to-Career Education

- Partnering to improve student outcomes in the Washington Cluster
- Funding + Governance + Wraparound
- \$16.4M pledged over five years



THE ARTHUR M. BLANK
FAMILY FOUNDATION





Cradle-to-Career Education

- Westside Early Learning study
- Residents employed through Westside Beautification Team

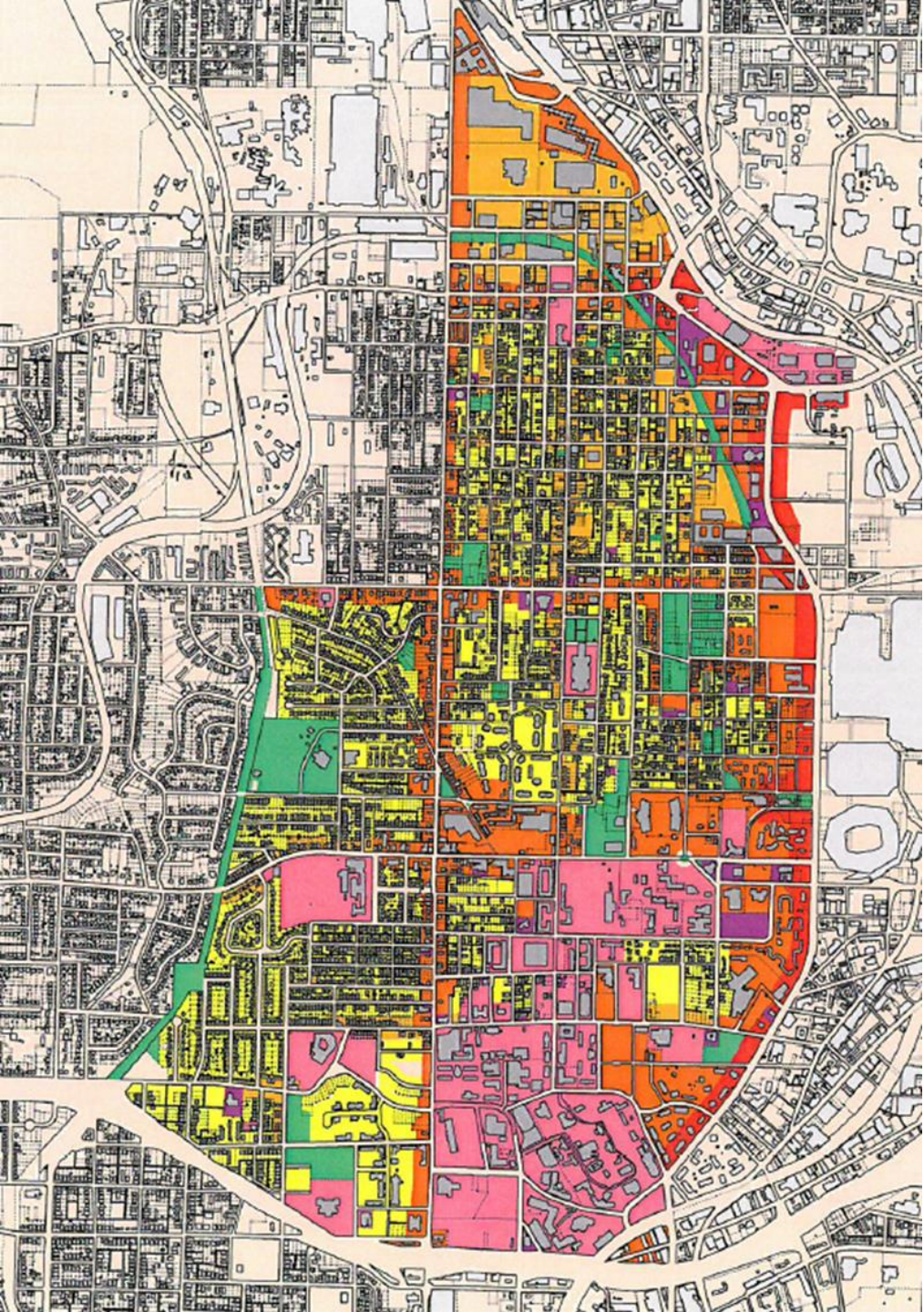


THE JAMES M.
COX
FOUNDATION


THE ARTHUR M. BLANK
FAMILY FOUNDATION


INTEGRITY
TRANSFORMATIONS COMMUNITY
DEVELOPMENT CORPORATION





Mixed-Income Communities

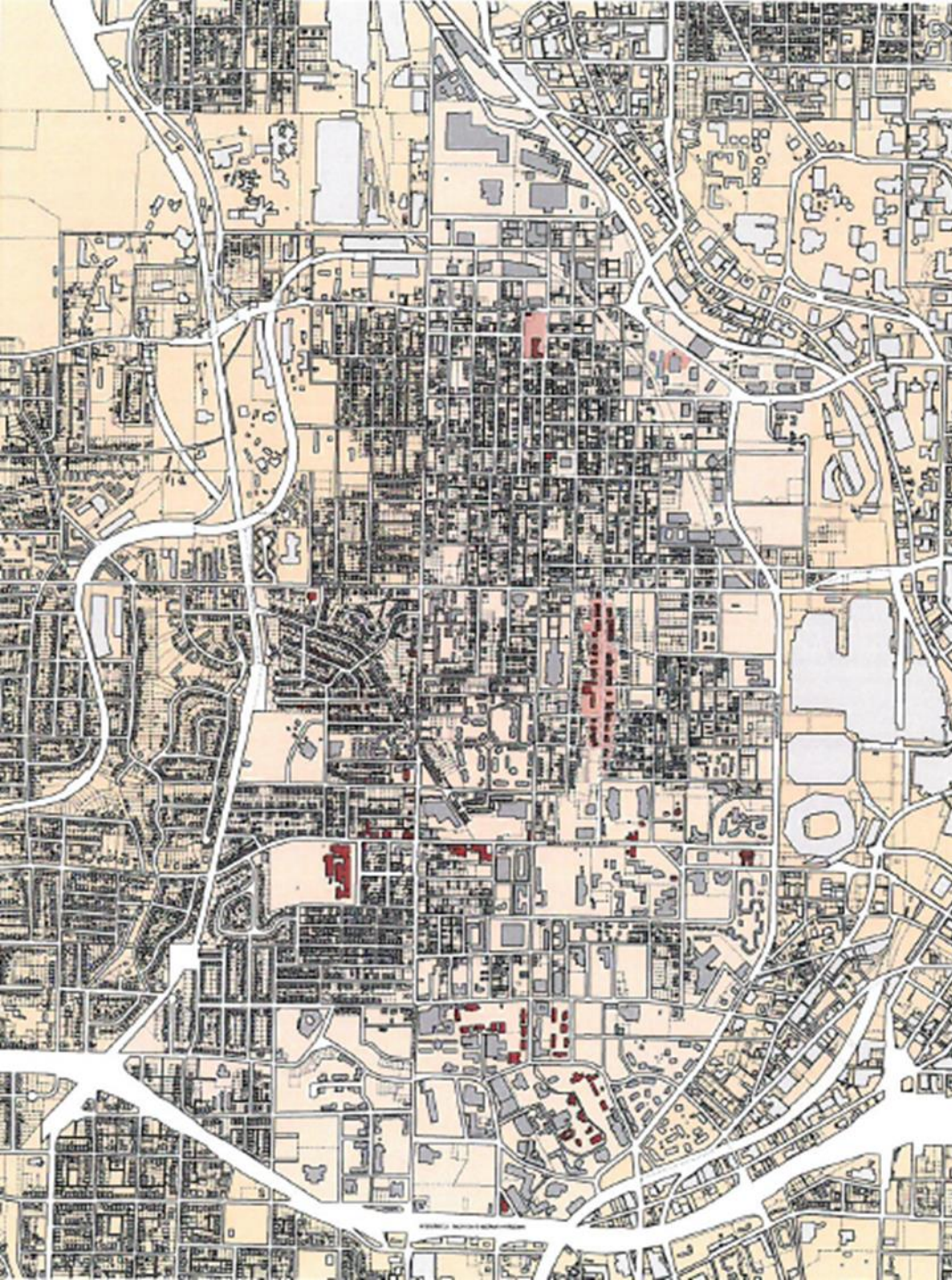
Community-Driven Planning

- Partnership with City of Atlanta and six neighborhood associations
- 101 stakeholder and community meetings held
- City Council unanimously adopted Land Use Framework Plan
- Next Step: Zoning and design standards



Chick-fil-A[®]
Foundation





Mixed-Income Communities

Community-Driven Planning

- Partnership with City of Atlanta and six neighborhood associations
- 101 stakeholder and community meetings held
- City Council unanimously adopted Land Use Framework Plan
- Next Step: Zoning and design standards



Chick-fil-A[®]
Foundation





Mixed-Income Communities

Anti-Displacement Tax Fund

- Of homeowners in the footprint:
 - 62 applications approved; 202 pre-registration forms received
- 600 homes reached through door-to-door canvassing
- Support from Atlanta Habitat for Humanity's "Brush with Kindness"

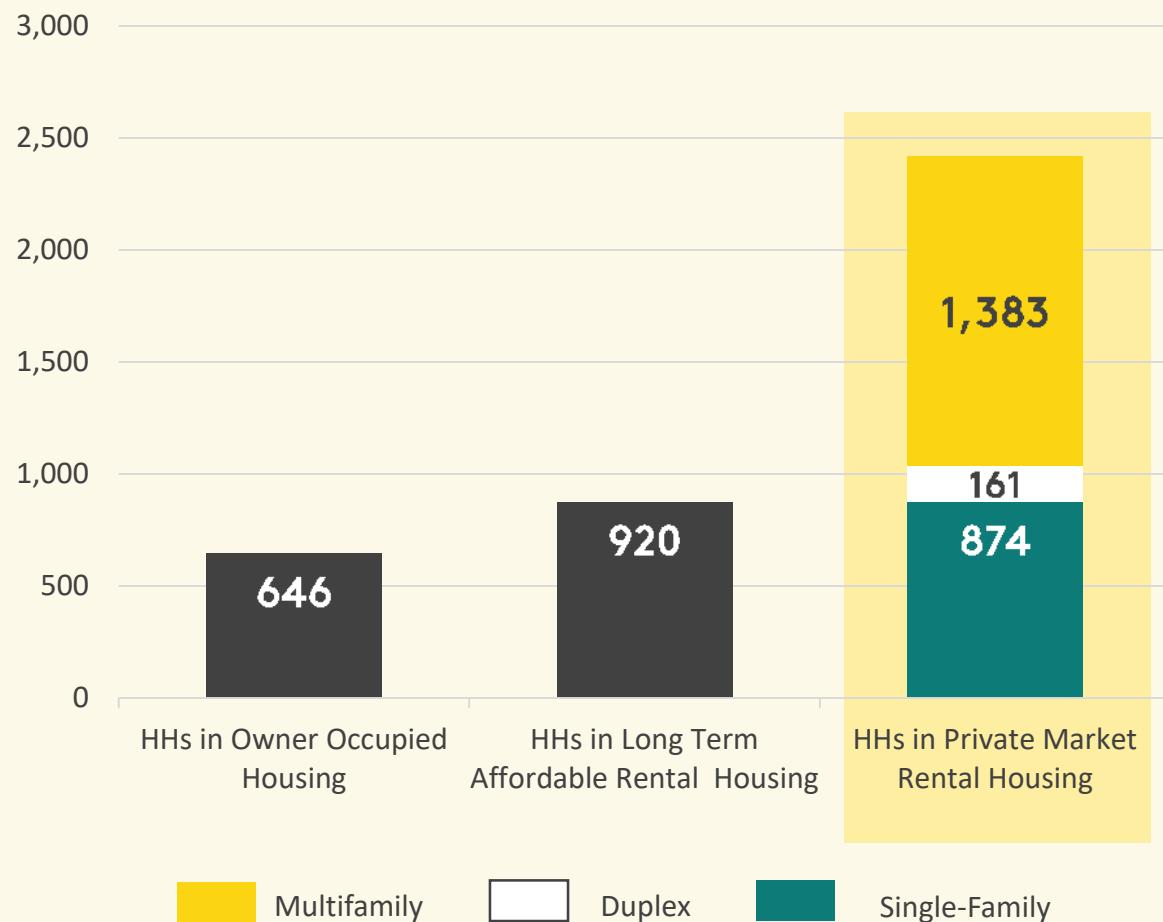


THE ARTHUR M. BLANK
FAMILY FOUNDATION



Urban Planning 
Management





Source: Atlanta Housing Authority, Fulton County Tax Assessor, Apartments.com.
Prepared by APD Urban Planning & Management.

92% of residents are renters

73% of renters are in private market units







Mixed-Income Communities

- 119 units currently under development, awarded, or occupied
- 603 James P. Brawley occupied by end of October
- Support from Corporate community matching our sense of urgency



Georgia Power





Convening and Engaging

Transform Westside Summit

- Hosted 40 Summits to date
- Approximately 6,000 attendees
- 90+ speakers and panelists
- More than 200 Westside Community Pledges made



**Chick-fil-A®
Foundation**





Convening and Engaging



- 12 Community Days of Service and 31 Corporate projects to date
- Over 1,500 volunteers engaged
- 40 nonprofits served
- Over 4,800 volunteer hours donated



Chick-fil-A[®]
Foundation



**United Way of
Greater Atlanta**



Safety & Security





Community Health & Wellness

Rodney Cook, Sr. Park, Vine City



An aerial architectural rendering of Kathryn Johnston Park. The park features a large, irregularly shaped green lawn in the center. A winding, light-colored paved path separates the lawn from a circular playground area located in the upper-middle section. The playground contains colorful equipment, including slides and climbing structures. The park is bordered by a dense forest of tall, green trees on the left and top. To the right, a residential street with houses and parked cars is visible. The overall scene is bright and sunny, with shadows cast by the trees and path.

Community Health & Wellness

Kathryn Johnston Park, English Avenue





Community Health & Wellness

Kennedy Park, Superbowl Legacy Project



ATLANTA
HOST TO SUPER BOWL LIII



THE ARTHUR M. BLANK
FAMILY FOUNDATION



Community Health & Wellness



KAISER
PERMANENTE®



THE ARTHUR M. BLANK
FAMILY FOUNDATION



Looking Ahead 2018–2019



CONVENING & ENGAGING COMMUNITY

Where We Need to Go



- Affordable housing + resident support
- Proactive effort to combat cultural displacement



- Investment across Washington Cluster
- Increased access to high-quality Early Learning
- More pathways to demand-driven jobs



- Increased WFF engagement and investment in this area



A Dedicated Team



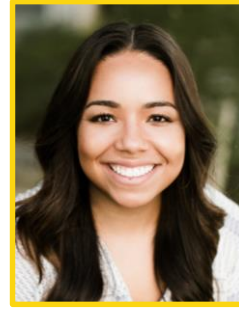
Jaren Abedania
VP of Real Estate



John Ahmann
President and CEO



Suzanne Allman
Controller



Hailee Bastien
Project Coordinator



Brandon
Burrows
Real Estate
Associate



Rachel Carey
VP of Project
Financing



Justin Carr
Director of
Partnerships



Lee Harrop
VP of Real
Estate
Development



Helen Hampton
Chief Administrative
Officer



Raquel Hudson
Director of Westside
Volunteer Corps



Mitchell King
Loaned
Executive
Georgia Power



Cheryl Strickland
Executive VP Real
Estate

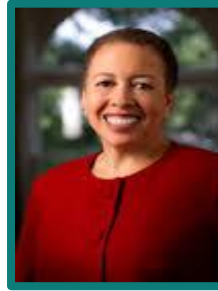


Cristel
Williams
Director of
Development

A Committed Volunteer Board



Richard Dugas
Board Chair
Retired President & CEO,
PulteGroup, Inc.



Beverly Tatum
Board Vice-Chair,
President Emeritus,
Spelman College



Liz Blake
Retired SVP, Habitat for
Humanity International



Michael Bond
Atlanta City Council Post
1 At-Large



Rodney Bullard
Vice President of Community
Affairs and Executive Director
of the Chick-fil-A Foundation



Mark Chancy
Corporate Executive Vice
President of Wholesale
Banking, SunTrust, Inc.



Dan Halpern
Chairman & CEO,
Jackmont Hospitality, Inc.



Virginia Hepner
Retired, CEO Woodruff Arts
Center/Wachovia Bank



Tommy Holder
Chairman & CEO, Holder
Construction Company



Penny McPhee
President, The Arthur M.
Blank Family Foundation



**Valerie Montgomery
Rice**
President and Dean,
Morehouse School of Medicine



Peter Muniz
Vice President and Deputy
General Counsel of The
Home Depot



Helen Price
President of The Coca-Cola
Foundation and Vice President
of Global Community
Affairs for The Coca-Cola
Company



Sylvia Russell
Retired President, AT&T
Georgia



Dave Stockert
Retired CEO, Post
Properties



Beverly Thomas
Vice President of
Communications and Public
Affairs, Kaiser Permanente of
Georgia



Ivory Lee Young, Jr.
Atlanta City Council,
District 3

EX-OFFICIO MEMBERS



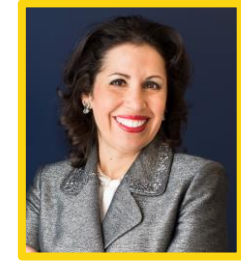
Richard Cox
COO, City of Atlanta/Loaned
Executive, Cox Automotive



Duriya Farooqui
Atlanta Committee
for Progress



Frank Fernandez
The Arthur M. Blank Family
Foundation



Eloisa Klementich
Invest Atlanta

A Collective Effort

COMMUNITY

Ashview Heights Community
Association
Vine City Civic
Association
English Avenue
Neighborhood
Association
AUC Neighborhood
Association
Historic Booker T.
Washington Community
Association
Just Us Neighbors
NPU-L
NPU-T

CORPORATE

American Family Insurance
Arthur M. Blank Family
Foundation
America's Mart
Arnall Golden Gregory

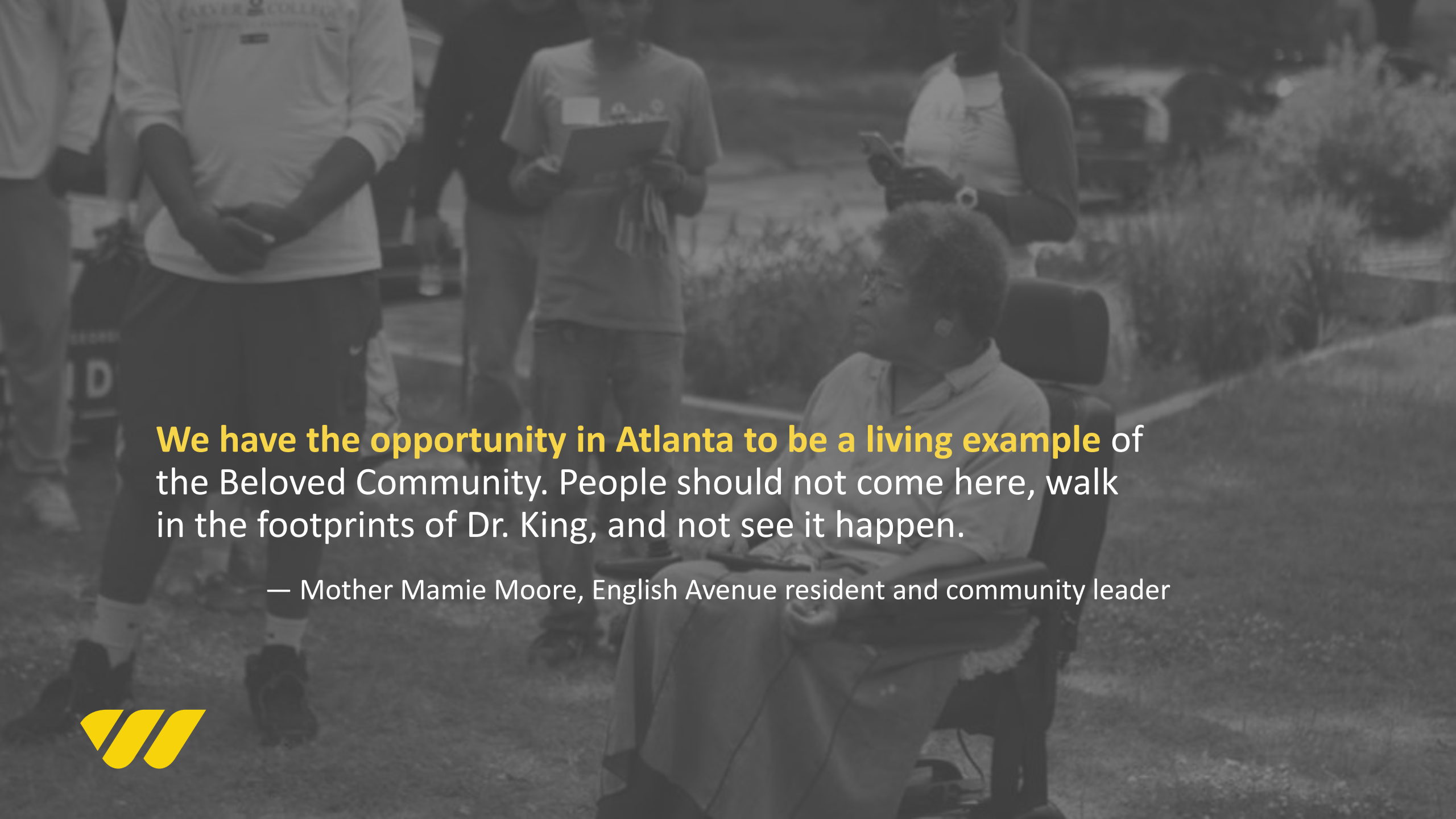
AT&T
Bank of America
Boston Consulting
Brown Family
Foundation
C.D. Moody
Construction
Chick-fil-A
Coca-Cola
Council for Quality
Growth
Cousins Properties
Cox Enterprises
Delta
Dentons
Equifax
Georgia Power
Genuine Parts
Georgia-Pacific
HJ Russell
Holder Construction
IHG
Jackmont Hospitality
John Wieland

Johnson/Allen
Foundation
Kaiser
King & Spalding
Mercedes-Benz
NCR
National Christian
Foundation
Northern Trust
Novelis
PulteGroup
SunTrust
The Home Depot
United Distributors
UPS
Wells Fargo

CIVIC

Atlanta Community Food Bank
Atlanta Housing Authority
Atlanta Police Foundation
Atlanta Public Schools
City of Atlanta

City of Refuge
Clark Atlanta University
Invest Atlanta
Morehouse College
Morehouse School of
Medicine
Quest Communities
Spelman College
Trust for Public Land
YMCA Metro Atlanta
Westside Works



We have the opportunity in Atlanta to be a living example of the Beloved Community. People should not come here, walk in the footprints of Dr. King, and not see it happen.

— Mother Mamie Moore, English Avenue resident and community leader

